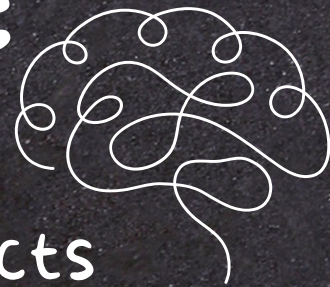


WHAT IS OCT?

Optical Coherence Tomography (OCT) is a non-invasive imaging technique that quantifies retinal structures such as the retinal nerve fiber layer (RNFL) and ganglion cell-inner plexiform layer (GCIPL)



RELEVANCE TO MS



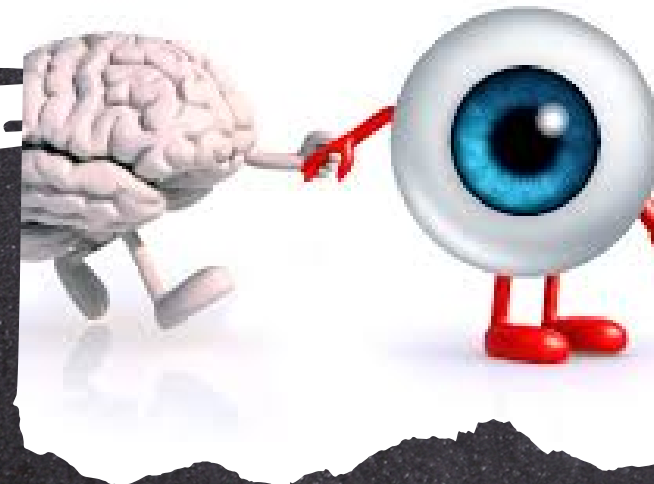
Since MS often affects the visual system, OCT detects early signs in the eye such as changes in the optic nerve and RNFL, thereby aiding in evaluating disease activity

CLINICAL INTEGRATION

OCT acts as a valuable tool alongside clinical assessments, especially for diagnosing visual changes such as optic neuritis, monitoring progression, and enhancing diagnostic accuracy.



MS & OCT: A DIAGNOSTIC DUO



EMERGING INSIGHTS

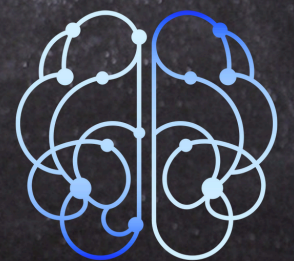
OCT can reveal retinal biomarkers like microcystic macular edema and thinning of the inner and outer nuclear layer indicating disease progression and refining MS diagnoses



TRAINING

Current OCT testing requires specialized training for both technicians and clinicians to ensure accurate data acquisition and interpretation, thus enhancing diagnostic reliability.

Presented By



JuneBrain